

# Pathology Case Challenge



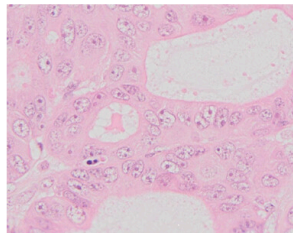
## ! Case of the Month is now called Pathology Case Challenge.

We heard your feedback—"Why is it called 'Case of the Month' when at least two cases go out each month?"—and have updated the program name. You'll see the switch reflected in emails, on cap.org, and in the MyCAP app. And you can still expect to see the same great case content to keep your skills sharp and test your knowledge.

This program offers at least two challenging cases each month from the CAP Performance Improvement Program in Surgical Pathology. For each case, you will use a virtual microscope whole slide image of a surgical specimen to diagnose diseases.

You will be presented with information on each case including: specimen source, clinical history, laboratory findings, and a representative whole slide image of the surgical specimen. After you complete each case, you will receive a case summary with three multiple-choice questions that relate to the case.

**Please note:** DigitalScope® is supported with Microsoft Internet Explorer 11.0 (limited support for IE 9 and 10) or later, or FireFox 4.0 or later, or Safari 3 or the latest Google Chrome version.



## Ovary

A 74-year-old woman with no prior history of cancer presents with a large abdominal mass. A large left adnexal mass is identified on a pelvic ultrasound exam. She undergoes a left salpingo-oophorectomy. Gross examination reveals an ovary weighing 795 grams and measuring 17 cm in the largest dimension. The outer surface appears unremarkable. Sectioning reveals the ovary is replaced by a solid mass that is negative for inhibin and CK20.

**MyCAP**  
WHERE PATHOLOGISTS CONNECT

Nurture skills and grow anytime with topic-driven interviews, interactive cases, and resource articles.

DOWNLOAD NOW

Download on the App Store | GET IT ON Google Play

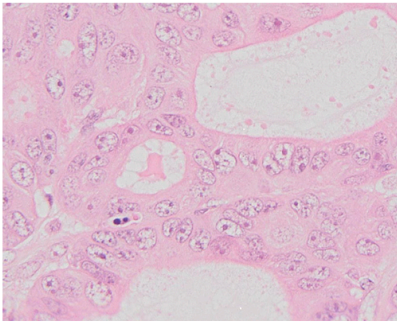
[Read the Pathology Case Challenge](#)

クリック

# Ovary



## Clinical Summary

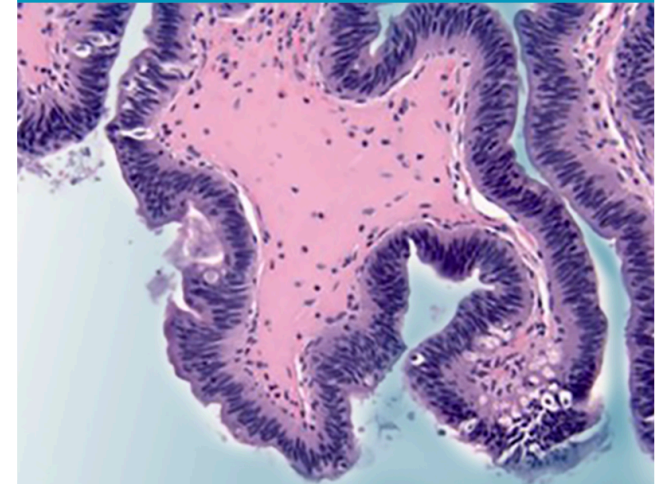


A 74-year-old woman with no prior history of cancer presents with a large abdominal mass. A large left adnexal mass is identified on a pelvic ultrasound exam. She undergoes a left salpingo-oophorectomy. Gross examination reveals an ovary weighing 795 grams and measuring 17 cm in the largest dimension. The outer surface appears unremarkable. Sectioning reveals the ovary is replaced by a solid mass that is negative for inhibin and CK20.

### Master List of Diagnoses

- Atypical endometriosis
- Endometrioid ovarian adenocarcinoma
- Metastatic colonic adenocarcinoma
- Mucinous adenocarcinoma
- Sertoli–Leydig cell tumor
- Yolk sac tumor

YOUR FEEDBACK RECEIVED:  
CASE OF THE MONTH IS NOW  
PATHOLOGY CASE CHALLENGE



[View slide image with DigitalScope](#)

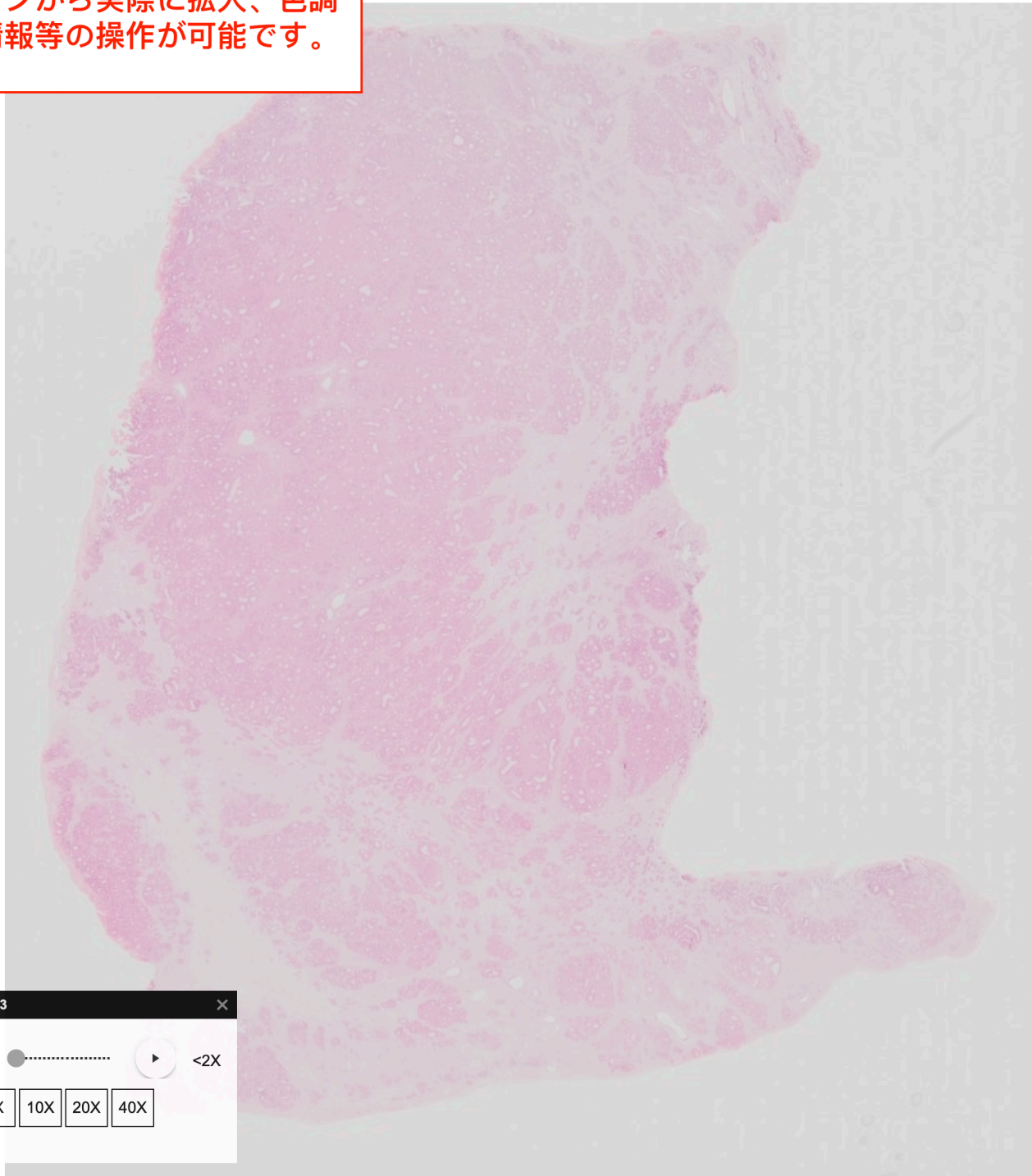
クリック

## Archive Case and Diagnosis

This case first appeared as Performance Improvement Program in Surgical Pathology (PIP) 2020, Case 13, and is endometrioid ovarian adenocarcinoma (ovary). The information provided in this case was accurate and correct at the time of publication in 2020. Any changes in terminology since the time of publication may not be reflected in this case.



左記のアイコンから実際に拡大、色調補正、症例情報等の操作が可能です。



2023 PCC-02 PIPW 2020-13

Navigation icons: Home, Up, Down, Left, Right, and a slider with a play button.

5X 10X 20X 40X

40867 X 46688

